



ORIGINALLUXURY

T4T Tech Partners

SARINE

Technology for Transparency Report
3rd Edition
December 2024



Company Information:

Sarine Technologies Ltd.

4 Haharash St.
Hod Hasharon
Israel 4524075

Contact Person:

Romy Gakh Baram
Director Global Marketing and Brand
romy.gakh-baram@sarine.com
+972 52 8000133

Website:

www.sarine.com

Company Description:

Established in 1988, Sarine Technologies Ltd. is a worldwide leader in the development and manufacturing of advanced modeling, analysis, evaluation, planning, processing, finishing, grading and trading systems for diamonds. Sarine products include the Galaxy® family of inclusion and tension mapping systems, rough diamond planning and optimization technologies, laser cutting and shaping tools, laser-marking, inscription and fingerprinting equipment, automated (AI-derived) Clarity, Color, Cut and light performance grading systems and traceability, visualization and retailing services. Sarine systems have become standard tools in every modern manufacturing plant, properly equipped gemology lab and diamond appraisal business, and are essential aids for diamond polishers, dealers and retailers.

Number of employees: 501-1000

Company's tagline:

The Diamond Industry, Reimagined™



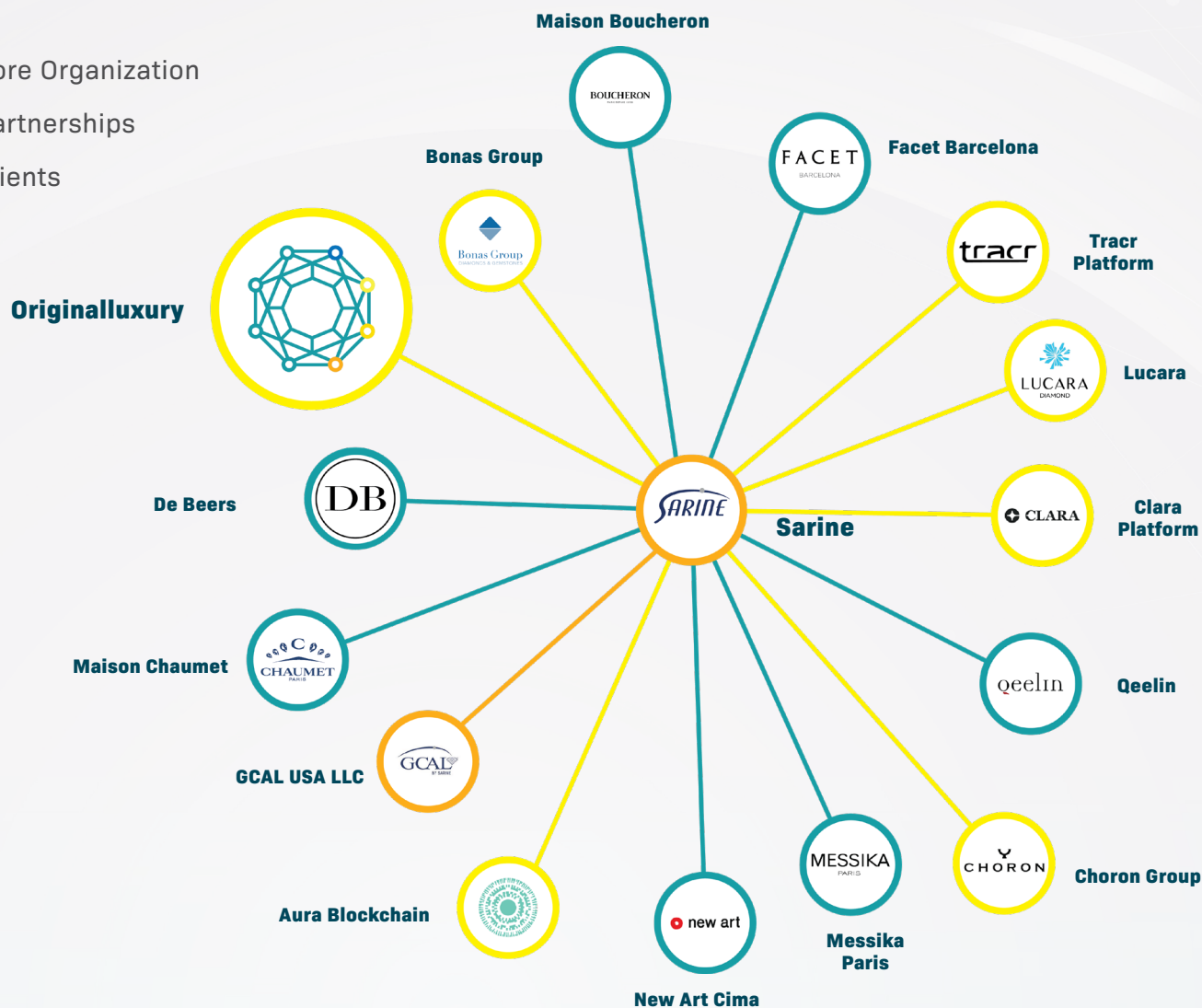
MISSION

Most diamonds, at their different life stages, are touched by Sarine through our innovative technology. Our mission is to participate in formalizing the diamond language, set the standards, inspire confidence, and optimize the diamond life cycle to benefit the public and our customers. We are committed to excellence, leadership and an ongoing passion for innovation.



Legend:

- Core Organization
- Partnerships
- Clients



Solution I:

Solution Name

- Diamond Journey Traceability™ Solution

Solution Overview

- Data Verifiable Traceability, a cutting-edge innovation that brings transparency, trust, and a unique story to every diamond.

Description:

- Sarine's data verifiable traceability method is to measure the diamond at different phases of the diamond's route. At each measurement stage data is collected and stored. The diamond is "birth registered" at the first measurement as a rough diamond in the traceability program. At each following measurement, additional data of the diamond is collected and registered. Matching algorithms developed by Sarine compare between the data in each two adjacent measurements to check the connection and verify that it is indeed the same diamond at different phases.



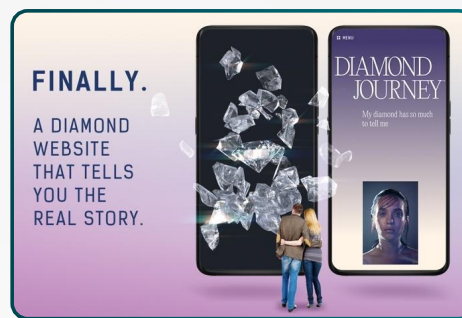
This is done again and again until there is a final verification of the connection of the diamond from its rough state all the way to its final polished state. This enables Sarine to also collect the data regarding the owners and users that possessed the diamond throughout its entire manufacturing and trading processes. Sarine uses data to objectively establish the link between a polished diamond and the rough diamond from which it was derived.

Target Audience:

- Luxury Jewelry brands, diamond suppliers, diamond buyers, wholesalers

Geography:

- Japan, China, France, India, US, Australia, Thailand, Indonesia, Taiwan, Korea



Traceability & Transparency Enhancement:

Traceability & Transparency Goals: What specific traceability & transparency challenges does your solution address?

- Diamond Data Verifiable traceability from rough to polished, from mine to the retail store.

Consumer persecutive: What are the key traceability and transparency challenges that your solution helps your customers overcome?

- To truly assess the traceability of diamonds, we must examine the entire supply chain, not just the source. The Sarine Diamond Journey™ traceability report offers a number of advantages as compared to other solutions. Most important is that Sarine provides an unmatched level of confidence, based on verifiable data received directly from thousands of Sarine systems in use along the diamond pipeline. Sarine systems at the producers or suppliers' facilities, capture the diamond's data every step of the way, enabling tracking of the diamond as it moves down the diamond pipeline from the mine to the consumer.

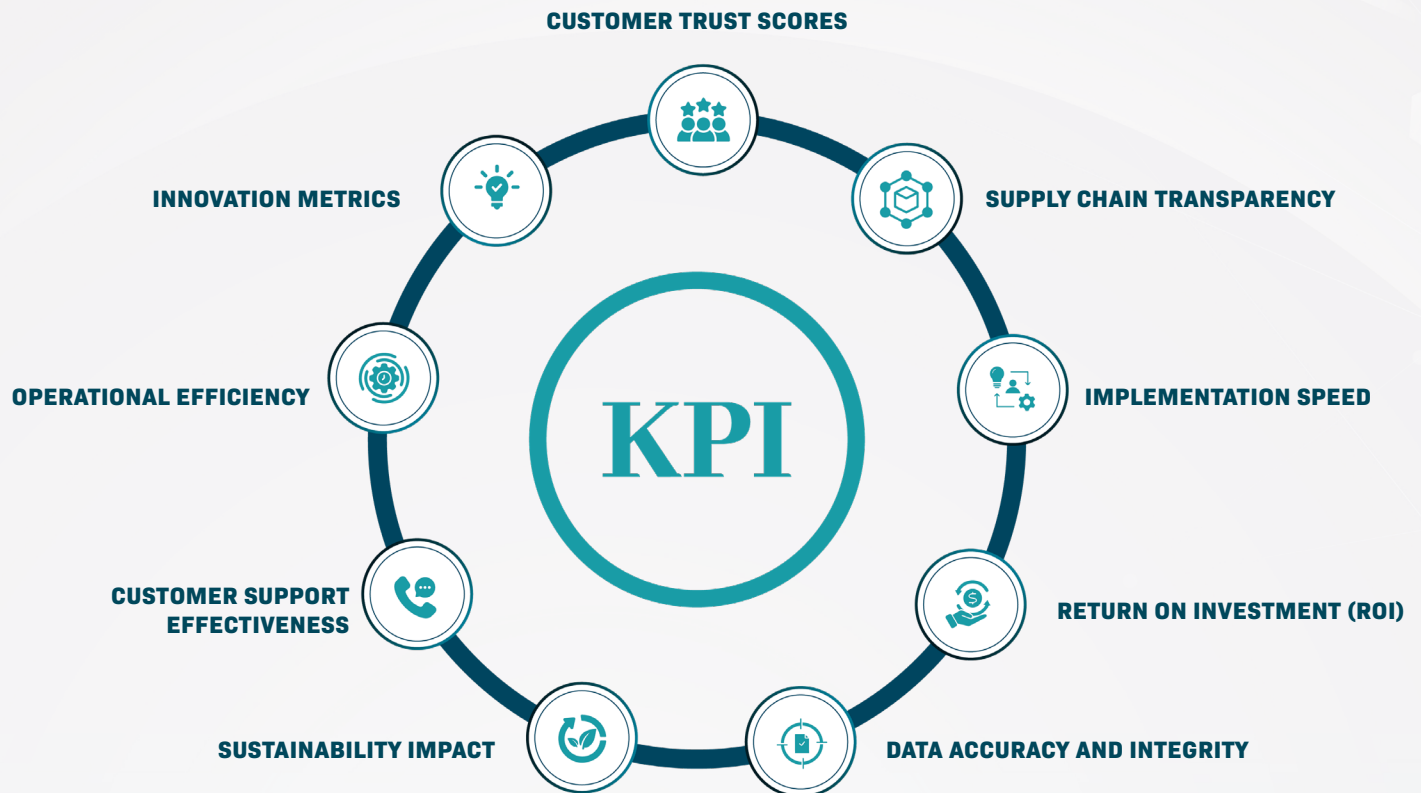
Technology Used:



Implementation:

French High Jewelry Maison Boucheron, part of the Kering Group (KER.PA), launched a new bridal jewelry line in January 2022, partnering with Sarine to offer Boucheron-branded diamond reports “powered by Sarine.” These co-branded reports provide a comprehensive overview of each diamond’s journey, from its natural rough state to its final jewel form. They detail the diamond’s mining and processing within Boucheron’s carefully curated supply chain ecosystem. Each report includes visual presentations of the diamond at various stages, culminating in its polished form, along with detailed 4C grading made possible by Sarine’s cutting-edge artificial intelligence technology. Available exclusively in digital format, these reports underscore Boucheron’s commitment to a sustainable jewelry industry.

KPIs used to measure the effectiveness of our solution.



Data Points for solution:

- Number of items benefiting from your solution
- Percentage increase in traceability/transparency/trust
- Reduction in fraudulent activities
- Number of brands/suppliers adopting the solution

Qualitative Data for solution:

- Client Testimonials:



"This new solution will provide complete transparency on product sourcing history and verifiable authenticity documentation, which is key to strengthening consumer trust in brands and fostering a long-term relationship, which is critical in today's rapidly evolving retail landscape. We anticipate additional leading luxury brands will soon be joining our unique consortium."

Daniela Ott
Secretary General



"Diamond traceability is rapidly becoming a must-have in our industry. We are adopting Sarine's solution, as it perfectly meets our needs — it provides a steadfast data-based solution and is scalable to our volumes of stones, as it only requires us to add a quick scan. Just as important, it integrates seamlessly with our customers' operations since they already employ Sarine systems in their cutting and polishing processes, which can now automatically continue the traceability process."

Mr. Philip Hoymans
Managing Director



"Finally, we decided to offer to our client a custom Boucheron Diamond Certificate, fully digitalized. We want to offer to our clients a unique experience, to tell them the beautiful story of their diamond. And we want to give them assurance on their stone's quality in a Boucheron certificate, not a certificate from an external laboratory. This creates a real trust relationship between the client and our Maison."

Hélène Poulit
CEO



"We are happy that we have found a strategic partner in Sarine that continuously introduces new high quality innovative solutions for diamond retailing. We have clearly benefited from this relationship and we believe that by now being the first retail chain worldwide to offer the Sarine Diamond Journey™, greatly enhanced by the new 3D-Origin™, we will maintain our brand's leadership and differentiation."

Mr. Shiraishi
President



"Almost every diamond is touched by Sarine's technology and being documented along the pipeline. Having a Sarine Diamond Journey™ is proof that your diamond is ethically sourced and helps gain the public's trust."

Mr. Timothy Sung
CEO

Company's values:

Forefront of the Diamond Industry, Honesty and Fairness, High Performance, Sarine People



Future Developments :

Vision:

- In recent years, the diamond industry has faced increasing demand to ensure the ethical sourcing and transparency of its supply chain. Therefore, a robust traceability mechanism based on independent and verifiable data is crucial to ensure the ability to know the source of diamonds entering G7 countries. Another important parameter is the ability to implement and seamlessly scale such a solution across the industry without imposing significant overheads. The Sarine Diamond Journey™ traceability solution addresses these challenges by leveraging advanced technology while using existing industry infrastructure to provide a detailed and transparent account of a diamond's journey from mine to consumer. Sarine's solution offers the only verifiable data solution in the market for tracking diamonds from rough to polish. Our proven technology is already in use across the pipeline and is ready for broader implementation.

Contact Information:

- **Technical support product:** oz.bennoon@sarine.com
- **Customer support:** anital.shoham@sarine.com

Use Cases with Boucheron

How Boucheron Uses Sarine To Transform The Customer Experience

At Boucheron, engagement consumers discover an exciting interactive customer experience like no other. That's because Boucheron teamed up with Sarine to create a custom diamond report that combines precise AI-powered grading with true verifiable traceability. Value and values come together to give clients confidence that this is the right diamond and the right store to buy it in.

Why did Boucheron decide to create a custom diamond report powered by Sarine?

Boucheron is committed to full traceability of its key raw material by 2025. Traceability and transparency of our supply chain is crucial to guarantee we uphold all our partners to our high social and environmental standards.

The Sarine Diamond Journey report enables us to gain verifiable data from every step of the supply chain, from the mine to the cutting factory to our workshops. The solution also relies on existing infrastructure and technology that are already integrated by our partners across the value chain.

Finally, we decided to offer to our client a custom Boucheron Diamond Certificate, fully digitalized. We want to offer to our clients a unique experience, to tell them the beautiful story of their diamond. And we want to give them assurance on their stone's quality in a Boucheron certificate, not a certificate from an external laboratory. This creates a real trust relationship between the client and our Maison.

How has the report been received by consumers?

Clients were very receptive to the story and our approach on transparency and traceability. On top of that, the digital certificate is innovative, experiential, and adapted to our modern lifestyles. You can store it easily, share it, and access it whenever you want from wherever.

Rigorous 4C grading remains key for every solitaire diamond client. We have confidence in the precision and accuracy of Sarine's AI grading. And the interactive digital certificate enables us to offer a comprehensive overview of the stone's beauty and character. Clients appreciate learning more about their stones in a visually impacting way. For example, the Diamond Journey report shows clients the steps their unique stone has travelled, from rough to polished, which is an engaging experience.



Boucheron CEO Hélène Poulit-Duquesne



The historic Boucheron boutique 26 Place Vendôme.

Founded in 1858, Boucheron has an important legacy. How do you balance tradition and the modernity of AI diamond grading and a digital-only report?

Boucheron enjoys a rich history and heritage, but innovation and progress are in our DNA. We like to challenge the status quo and believe that what our clients want is the utmost accuracy of their diamond grading and that is what AI grading can offer. They also care about the provenance of their diamond and the impact it can have on the world. They are curious and want to discover the beautiful story of their stone. And thanks to Sarine that's what our Boucheron digital report can offer.

Boucheron, Sarine Partner on Traceability Report



RAPAPORT... Sarine Technologies and French jeweler Boucheron have created a cobranded diamond report featuring grading information and provenance details.

The unit of luxury group Kering will use the Boucheron Diamond Certificate for a new traceable bridal line called Etoile de Paris, Sarine said Monday

The document, available in digital form only, presents the stone's journey from rough to polished, featuring an image of the rough and stating the country of origin. It also displays a scan showing how mapping technology helped the manufacturer plan the final piece.

The viewer can see the diamond's measurements and 4Cs on an interactive page, and download a PDF version of the certificate, which bases its grades on Sarine's artificialintelligence systems. There's an option to share the report via email, WhatsApp or SMS.

"We believe that sustainability is of the utmost importance and are pleased we can contribute to ensuring that our industry can demonstrate it is upholding much-needed standards," said Sarine CEO David Block. "We are confident this will further increase the value of natural diamonds."

Boucheron's branding is the most prominent throughout the report, with the jeweler's logo appearing at the top of the certificate. The words "powered by Sarine" appear in smaller print.

Boucheron joins a growing list of mining and retail companies that have signed up to use Sarine's traceability technology. The segment is still a small part of the Israel-based company's business, with sales from its wholesale and retail activities contributing just under 6% of total revenues in the first half of 2021. Most of the remainder comes from sales of mapping equipment and services to cutting firms.

In October 2021, Pomellato, another Kering jewelry brand, launched a mobile app enabling customers to trace the origins of the gold and gemstones in a given product.

Image: A Boucheron store in Vilnius, Lithuania. (Shutterstock)



DATA VERIFIABLE TRACEABILITY

Welcome to Sarine's Diamond Journey Traceability™ Solution, a cutting-edge innovation that brings transparency, trust, and a unique story to every diamond.

The essence of diamond traceability

Every natural diamond is a masterpiece of nature, and its journey from the depths of the Earth to your hands is a story waiting to be told. Sarine's Diamond Journey Traceability™ Solution is designed to capture every step of this remarkable journey. At Sarine, we employ data verifiable technology to track a diamond's journey from its source through every transformation from rough form to polished beautiful stone.

Our solution:



Origin Verification

Unveiling the diamond's precise origin, whether it's a mine in Botswana, Namibia, Canada or South Africa. We provide you with the transparency you need to make informed choices.



Data Verifiable Traceability process

Follow your diamond's progress as it moves through the various stages of its journey. From rough to polished, from cutter to jeweler, every transformation is verified by Sarine systems.



Diamond Storytelling

Every diamond has a unique narrative, and we help you bring that story to life in Sarine Diamond Journey Traceability™ Reports. Digital and printed reports contain diamond data that was requested by a retailer.



Scalable Traceability you can rely on

The solution leverages deployed Scalable Traceability, integrates seamlessly into existing manufacturing processes, and incorporates data deliverables into any trusted platform.

Brief Explanation of the Sarine Traceability Process

Sarine's traceability method is to measure the diamond at different phases of the diamond's route. At each measurement stage data is collected and stored. The diamond is "birth registered" at the first measurement as a rough diamond in the traceability program. At each following measurement, additional data of the diamond is collected and registered. Matching algorithms developed by Sarine compare between the data in each two adjacent measurements to check the connection and verify that it is indeed the same diamond at different phases. This is done again and again until there is a final verification of the connection of the diamond from its rough state all the way to its final polished state. This enables Sarine to collect the data regarding the owners and users that possessed the diamond throughout its entire manufacturing and trading processes. Sarine uses data to objectively establish the link between a polished diamond and the rough diamond from which it was derived.

The phases of diamond data collection for traceability purposes:



Birth Registration
at rough diamond stage.



Rough to Rough Change of Ownership Registration
each time a rough diamond switches ownership.



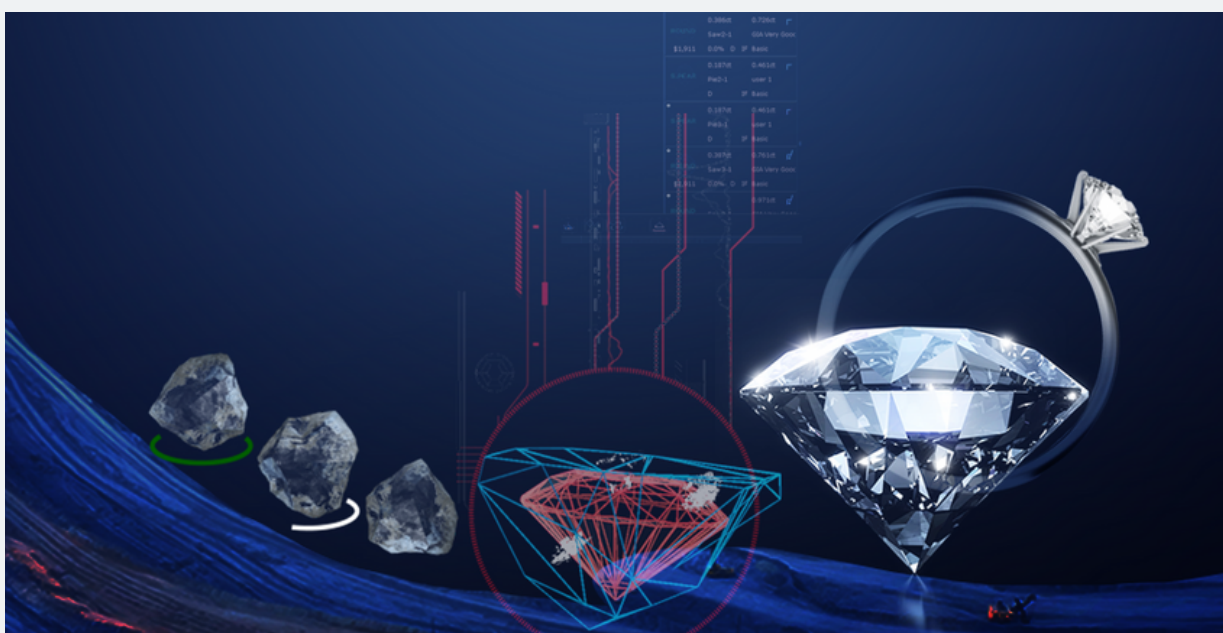
Part Final Plan Registration
polished diamond final plan on a rough part from which a single diamond will be extracted.



Polish Registration
registration of the fully polished diamond.



Polish to Rough Ownership Trail Verification
final measurement of polished diamond that enables rough to polish verification and ownership trail.

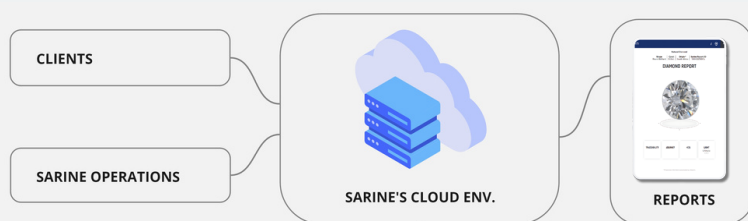


Sarine traceability report™

Sarine packages the traceability data in a detailed Sarine report, available digitally, with options for a hard copy and a 3D replica of your rough diamond.



Data access high-level hierarchy



- **Sarine's operations** – Data can be accessed only for support and maintenance purposes by permitted employees.
- **Clients** – Data of each client can be accessed by the specific client through dedicated web applications.
- **Sarine's cloud environment** – A secured environment hosts Sarine's cloud services and storage.
- **Reports** – Data is stored in a main storage and backups.



Embrace the future of diamonds

As the diamond industry evolves with lab-grown diamonds and demands for transparency, traceability and ethics become increasingly crucial, retailers in this space will face new challenges and opportunities.

Start your journey with Sarine.

Contact us to learn more

sales@sarine.com

[Sarine.com](https://www.sarine.com)

© Sarine Technologies Ltd.